

# Welcome

back to  
*South Wigston Methodist  
Church*

You'll see some changes but please keep everyone safe by respecting the new arrangements.

This leaflet explains some of the changes.

This is the first time we have had to do this so please be patient with the newcomers who are helping.

Your comments will be taken into consideration over the following weeks and small changes may be made.

There will be a queuing system – please allow plenty of time to arrive and get settled. (See foyer one-way system plan)

**DO NOT come to church if you have any C-19 symptoms.**

There are no plans for Junior Church to resume but children are welcome to attend the service.



## What to bring with you:

- ✓ A face mask or face-covering – these are now compulsory, but with some exemptions (see back page).
- ✓ Bottled water (water will not be available in the worship area).
- ✓ Your own hymnbook, Bible and worship book if you have them.
- ✓ A cushion if you need one – the seatpads on the wooden pews have been removed to help with cleaning.
- ✓ Warm clothing – the doors & windows will be open most of the time to ventilate the building.

## When you arrive:

- ✓ You will be asked to queue outside, from the car park, distanced 2 metres apart; family groups & bubbles can stay together.
- ✓ A welcomer will invite you to come in.
- ✓ Please use the hand sanitizer in the foyer
- ✓ Next go to the signing-in table where you will need to give your name; we have to keep a register for Test & Trace purposes (see back page)
- ✓ Keep your coat, bag, umbrella and other belongings with you and go upstairs. Pushchairs can be left under the stairs.

The lounge and coffee bar will be closed.

## Toilets

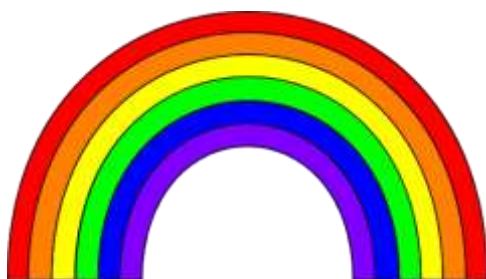
If you need to use the toilet please follow the one-way system and note the queuing information on the doors. Please speak to a welcomer if you need to use an accessible toilet. Don't leave your coat, umbrella or anything else on the coat racks or in the toilet areas.

## People with disabilities

The chairlift will be available as usual.

Please leave mobility scooters under the stairs in the foyer.

**The worship area** has been laid out to follow the social distancing guidelines of 2 metres. Rainbows and crosses show which seats you can or cannot use. (See the worship area plan)



The church stewards have tried to anticipate the numbers of single people, couples and family groups. Please DO NOT move any chairs or signs. Adjustments may be made over the following weeks if necessary.

Children must remain with their parent/carer at all times.

Please sit where the welcomer directs you and keep coats & other belongings with you. (Hang your coat on the chairback or put it under your seat)

The offering – please put your envelope or collection money in the boxes opposite the top of the stairs. It is still better if you continue to pay by standing order, or cheque.

If you become unwell please seek help from a welcomer.

## **Worship**

The service will be a maximum of 45 minutes.

Regretfully, at the moment, we can't sing! This is a Government directive supported by the Methodist Church.

The minister or local preacher will adapt their service to these different circumstances.

Please say the Lord's Prayer and any responses in a quiet voice.

There are special guidelines for Holy Communion

## **After the service**

Please remain distanced & wait for the welcomer to direct you to leave. Put church hymnbooks etc in the designated crate.

Please use the hand sanitiser on the way out.

Go straight out and do not stay to chat in the building; refreshments will not be served, and the lounge & coffee bar will be closed.

If you need to use the toilet please follow the one-way system.



*Thank you for your co-  
operation*

Government & Methodist Church regulations or guidance may change. Updates will be announced in the weekly newsletters.

## **Test & Trace – Methodist Church information**

### **Why are we asking you to provide this information and what will we do with it?**

The Government has requested that Churches in England assist the NHS Test and Trace service by keeping an accurate temporary record of visitors for 21 days. Please assist the Church in fulfilling this request by completing the record as indicated.

The Methodist Church cares about your privacy and your trust is important to us. Our Privacy Notice explains how Local Churches, Circuits and Districts within the Methodist Church in Great Britain collect, use and protect your personal information. It also provides information about your rights (paragraph 9 of the Privacy Notice) and who to contact (paragraph 1 of the Privacy Notice) if you have any questions about how we use your information.

You can find our Privacy Notice online ([www.t MCP.org.uk/about/data-protection/managing-trustees-privacy-notice](http://www.t MCP.org.uk/about/data-protection/managing-trustees-privacy-notice)) or displayed at the Building. Please ask us for a copy of the Privacy Notice if this would be of assistance.

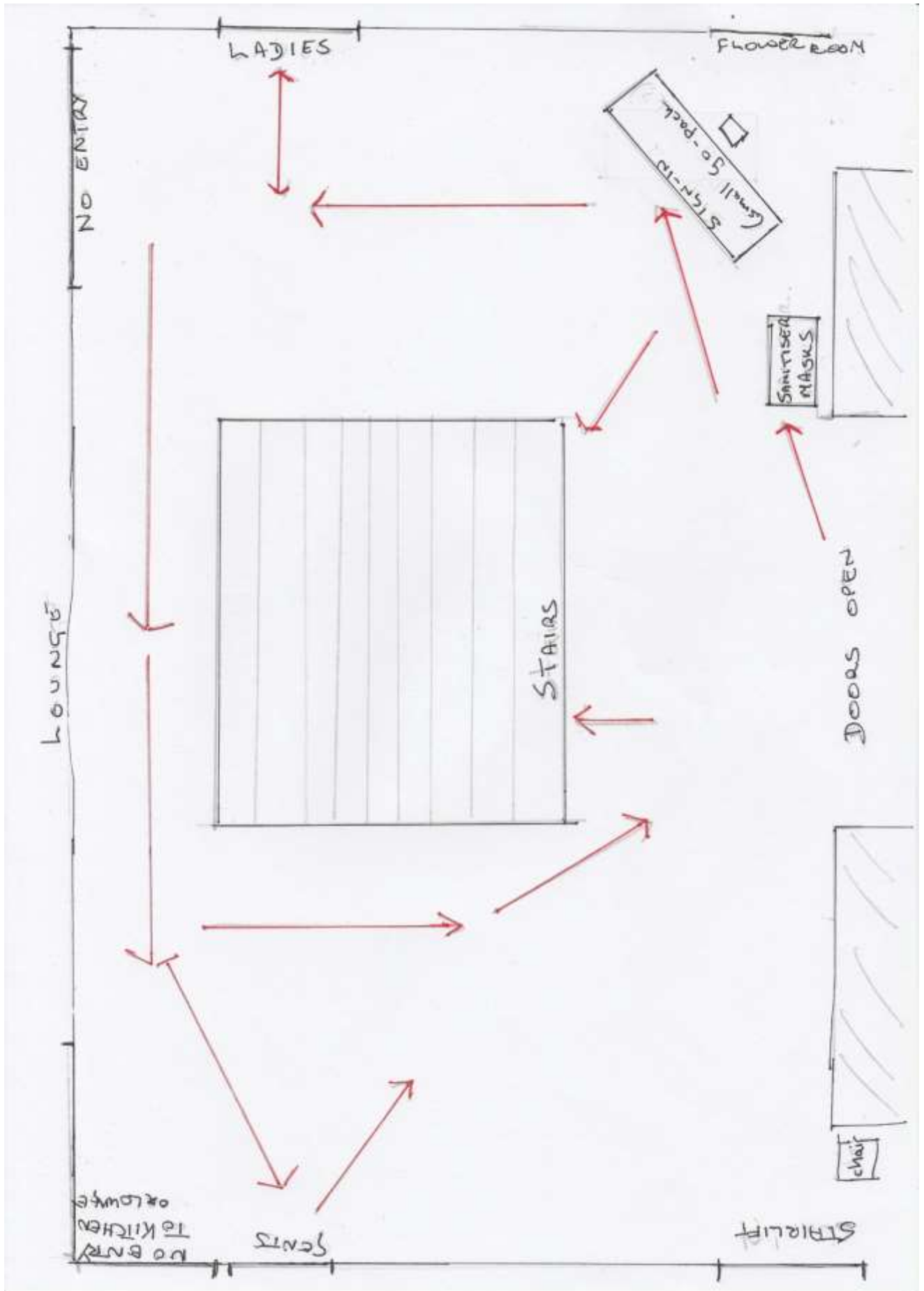
In addition to the information in our Privacy Notice we confirm that the information we are asking for on this record is collected for the purpose of assisting the NHS Test and Trace service with contact tracing. **If the NHS Test and Trace service request details of our visitors for the purpose of contact tracing, we will share relevant information from this record with them and contact details e.g. telephone number and/or email addresses. These will either be contact details that we already hold for you or details that you provide when you sign-in.** This record will be destroyed after 21 days in accordance with Government guidelines.

### **Exemptions to the wearing of face coverings**

This includes (but is not limited to):

- children under the age of 11 (Public Health England do not recommend face coverings for children under the age of 3 for health and safety reasons)
- people who cannot put on, wear or remove a face covering because of a physical or mental illness or impairment, or disability
- where putting on, wearing or removing a face covering will cause you severe distress
- if you are speaking to or providing assistance to someone who relies on lip reading, clear sound or facial expressions to communicate
- to avoid harm or injury, or the risk of harm or injury, to yourself or others - including if it would negatively impact on your ability to exercise or participate in a strenuous activity
- in order to take medication
- if you are delivering a sermon or prayer in a place of worship

# Foyer one-way system



# Worship area plan

